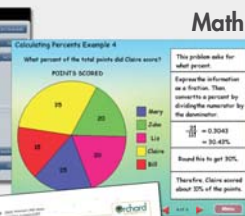


Language Arts



Math



Science



Introduction

Orchard Gold Star is an award-winning comprehensive integrated software system that provides targeted, standards-based instruction in math, reading, writing, language arts, and science for grades K-9. It is comprised of three main components:

- Orchard for Your State (state-correlated assessments)
- Orchard Skill Tree instructional modules
- Orchard Data Management

Once a student is enrolled, an assessment is administered to establish a benchmark and to prescribe instruction to meet the student's needs. Orchard stores student performance data, which is easily available to the educator through an array of practical, simple-to-understand reports.

Try Orchard Skill Tree Instructional Modules

At the Orchard Login Screen, select Guest

Guest mode allows you to try Orchard Skill Trees without capturing data.

- At the Choose Program screen, select one or more of the programs listed. For language arts, you may wish to try one of the Guided Comprehension* titles or Spelling Buzz. For math, you may wish to sample Numeration K-3 or Number Facts: Mixed Practice.
- Explore more modules as time permits. You may wish to view an inquiry-based science lesson in a module such as Biology Concepts: Photosynthesis
- When you have finished examining Orchard's instructional content, click Cancel in the Choose Program screen to return to the Login screen.

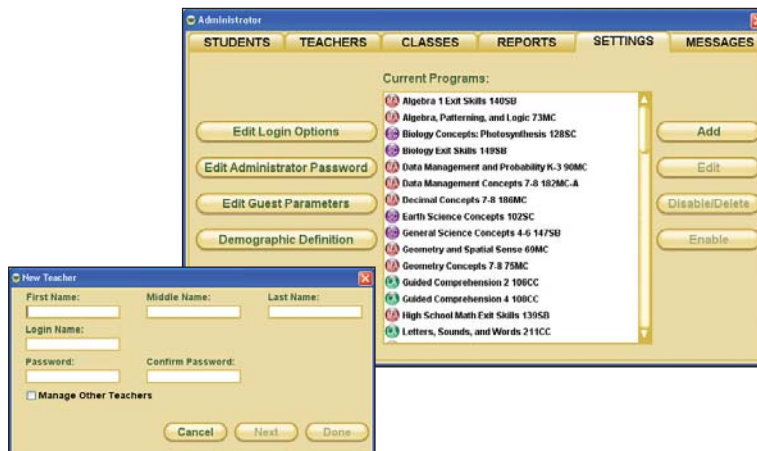


* Some programs include a demonstration mode that allows you to move quickly through the content using the key combinations CTRL-N or CTRL- →.

Login as a Teacher

To enter as a teacher, type Demo for the login and password.

As an Orchard Teacher, you will be able to modify student profile data, customize student and class assignments, activate Orchard's teacher tools, monitor student usage and progress, generate Orchard reports, and manage class and student parameter settings.



Create a class

Log in using Demo login name and password.

- At the Select Class window, click **New Class**. Type a name for your Orchard class—e.g., Ms. Smith's Class. Select the new class.
- Note there are four control tabs at the top of the Teacher screen: Students, Class, Reports, and Messages.

Add students

To add students from the Teacher screen of the Orchard Manager, select the **Students** tab. Click the **New Student** button. Enter student information in the designated fields.

Create an assignment

Assign a test

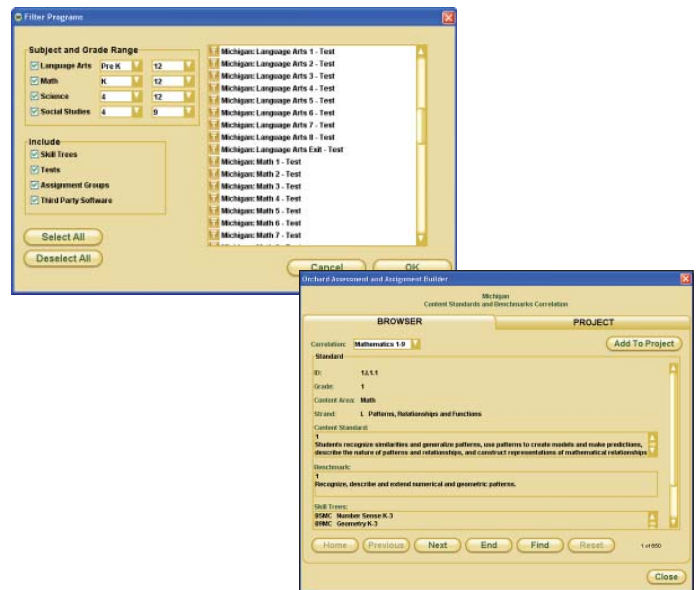
To assign an assessment from the Teacher screen of the Orchard Manager, return to the **Class** tab.

- Click the **Edit Class Assignments** button.
- Scroll down the list and select one of your state-based assessments. You can also assign programs by subject and grade level with a click of the Filter List button.
- Click Add, then OK.

Create a custom standards-based assessment or assignment

To create a custom assessment or assignment from the Teacher screen of the Orchard Manager, return to the **Class** tab.

- Select **Teacher Tools** and then **Assessment and Assignment Builder**. Orchard's Assessment and Assignment Builder (OAB) includes the complete correlation to your state standards and enables teachers to make assignments by specific standards. Take some time to browse the tools available within OAB.



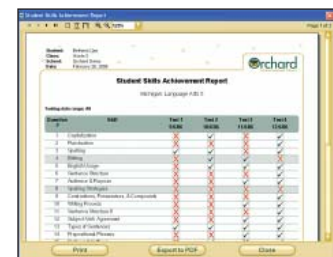
Take an Orchard assessment

- Login to Orchard as the student you created and take the assessment you assigned to the student's class. Be sure to answer some items incorrectly. When you have completed the assessment, Orchard will display your score.
- Orchard will assign Skill Tree modules according to the skills yet to be mastered.



Access Orchard Reports

- Login to Orchard as the Demo Teacher and click on the **Reports** tab.
- View the **Student Skills Achievement Report** for your student's assessment.
- Sample data has been provided so other Orchard reports may be viewed.



For more information, contact your Orchard reseller, call 1-800-351-1404, or visit www.OrchardSoftware.com.