

## High School Graduation Qualifying Examination

By helping students reach proficiency in reading, writing, and mathematics, Orchard Software provides comprehensive, motivational preparation for your high-stakes tests.

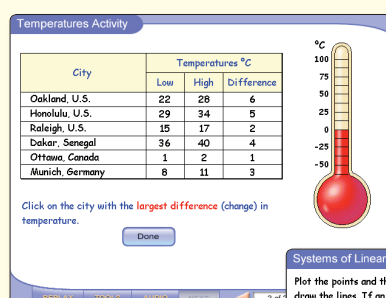
### Mathematics

The Mathematics portion of this bundle includes a comprehensive, curriculum-based set of 27 Skill Trees correlated to NCTM standards. These multimedia programs consist of interactive tutorials, problem-solving activities, explorations, exercises, and various tools such as a scientific calculator, a glossary, and a journal.

Designed to build students' knowledge and understanding of essential concepts, these robust Mathematics programs utilize animated graphics and motivational activities to facilitate concept development. In addition, each program provides students with a variety of problem-solving strategies.

### Mathematics Skill Trees

- Algebra 1 Exit Skills 140SB
- Algebraic Foundations 187MC
- Algebra, Patterning, and Logic 73MC
- Data Management and Probability: Beg 90MC
- Data Management and Probability Concepts: Adv 182MC
- Decimal Concepts 186MC
- Fraction Concepts 185MC
- Functional, Geometric and Statistical Relationships 188MC
- Geometry Concepts 75MC
- Geometry and Spatial Sense 69MC
- Graphing and Managing Data 70MC
- High School Math Exit Skills 139SB
- Linear Relations 189MC
- Math Strategies: Beg 137SB
- Math Strategies: Int 138SB
- Math Strategies: Adv 150SB
- Math Word Problems: Intermediate (5-6) 17LG
- Math Word Problems: Advanced (7-8) 18LG
- Measurement: Int 72MC
- Measurement Concepts: Adv 184MC
- Number Sense 67MC
- Patterning and Algebra Concepts 74MC
- Percent Concepts 77MC
- Perimeter, Area, and Volume: Mixed Practice (5-8) 66LG
- Quadratic Relations 190MC
- Rate, Ratio, and Proportion Concepts 183MC
- Rounding: Mixed Practice 7LG



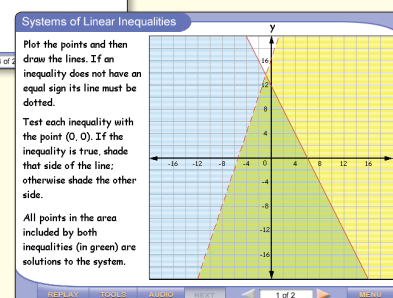
City	Temperatures °C		
	Low	High	Difference
Oakland, U.S.	22	28	6
Honolulu, U.S.	29	34	5
Raleigh, U.S.	15	17	2
Dakar, Senegal	36	40	4
Ottawa, Canada	1	2	1
Munich, Germany	8	11	3

Click on the city with the largest difference (change) in temperature.

Done

Students hone their problem-solving skills to master essential algebraic foundations.

Students learn to understand linear functions through interactive tutorials, activities, and problem-solving applications.



Plot the points and then draw the lines. If an inequality does not have an equal sign its line must be dotted.

Test each inequality with the point (0, 0). If the inequality is true, shade that side of the line; otherwise shade the other side.

All points in the area included by both inequalities (in green) are solutions to the system.

## Language Arts

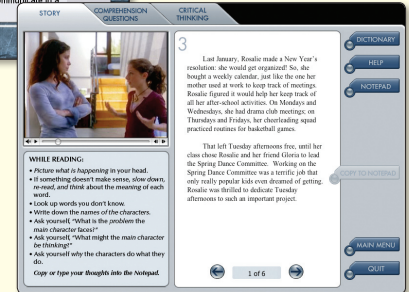
The Language Arts portion of this bundle includes 13 Skill Trees with a mix of direct instruction in reading, writing, grammar, and usage. This bundle is ideal for providing the proper instruction in areas where students need the most help.

The practice and test questions in these programs provide students with continual assessment, serving as an excellent review tool before taking the state's exit exam. Plus, the constant instructional feedback provided throughout these programs allows students to work independently while continuing to sharpen their skills.



*Reading strategies and thought-provoking exercises guide students through the process of improving their reading skills.*

*A variety of content-area passages are included, as well as graphs, charts, maps, and schedules.*



## Language Arts Skill Trees

- Grammar: Advanced 35SB
- High School Language Arts Exit Skills 144SB
- Parts of Speech: Advanced 40SB
- Punctuation: Advanced 42SB
- Reading and Writing Strategies 143SB
- Reading Comprehension I 206CC
- Reading Comprehension II 207CC

- Reading Comprehension and Critical Thinking 205CC
- Reading, Research, and Language Skills 181CC
- Writing and Media Literacy 180CC
- Writing Process Series: Expository Writing 210CC
- Writing Process Series: Narrative Writing 208CC
- Writing Process Series: Persuasive Writing 209CC

## Orchard Assessment

Orchard Software's assessments are based upon Common Core and state standards, and provide a powerful interim assessment tool that informs and assigns targeted, standards-based instruction for high school students. These tests, along with the Orchard Gold Star manager, are included with each High School Bundle.

## Orchard Gold Star Manager

The Orchard Gold Star manager provides educators with industry-leading formative assessment, student specific instruction, and detailed analyses. A variety of student, class, and school reports yields critical information for more insightful, data-driven decision making. In addition, Orchard Gold Star enables teachers to create specific state-correlated, standards-based assignments and formative assessments based upon their own instructional plans.